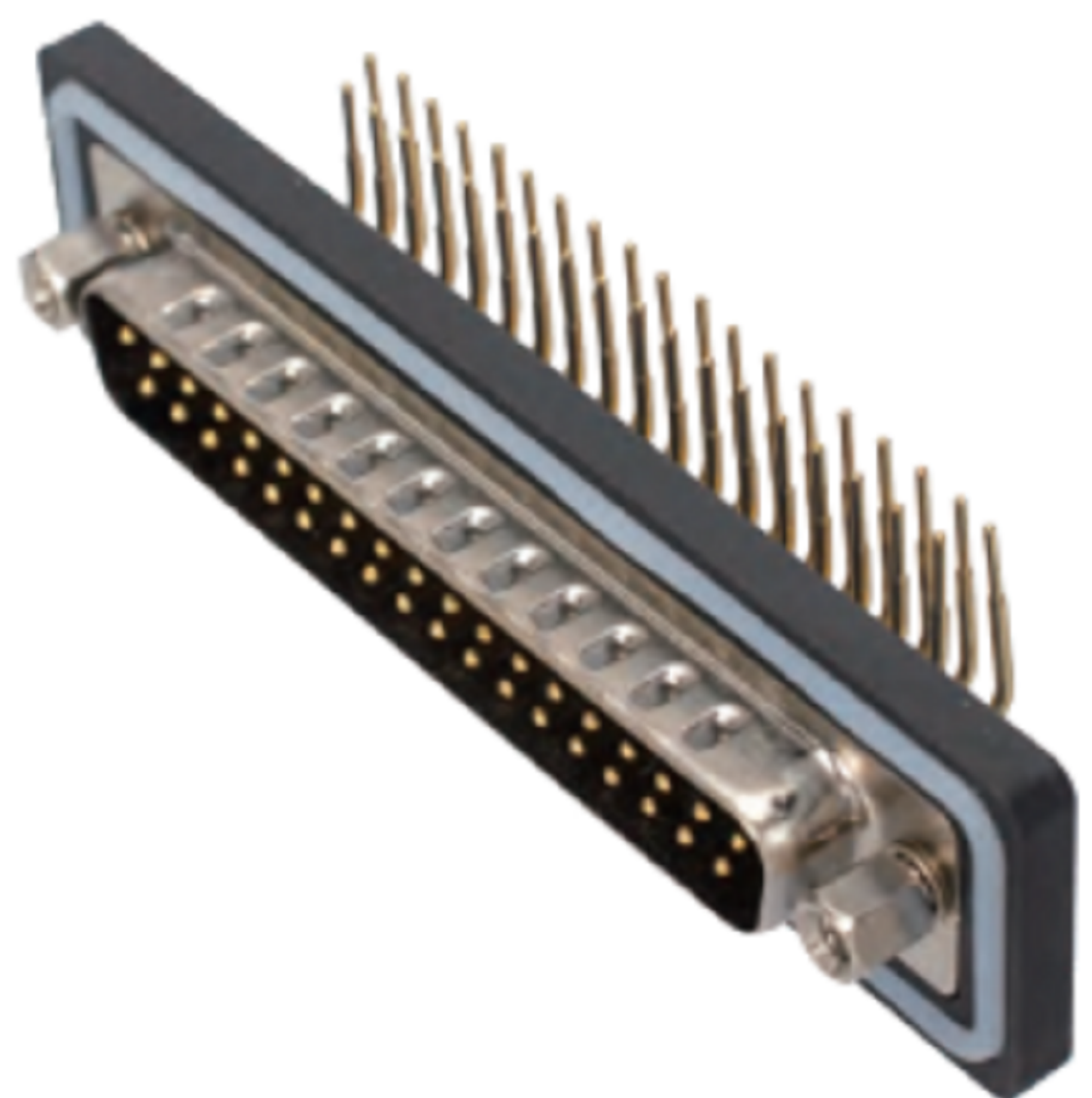


弯式针型插座(焊板式)
 EDB4 Curved Male Socket(PCB)
 EDB4 - M 37 - PPL 14

芯数: 37 62H 8W8 13W6 21W4 25W3 27W2	大针线规: 14:14AWG 10:10AWG 08:8AWG 06:6AWG(默认) 空:小针
---	---



产品参数 PRODUCT PARAMETERS

额定电流 Rated current	10A/20A/30A/40A	插拔力 Plug and unplug force	符合IEC60807-3
额定电压 Rated voltage	1000 V	接线范围 Wire bound	8mm~14mm
耐电压 Withstand Voltage	500 V	插拔次数 Durability	≥500次(Cycles)
绝缘阻抗 Insulation resistance	5000 MΩ	适用温度 Applicable temperature	-55°C ~ +105°C
接触阻抗 Contact resistance	10 mΩ	防水等级 Waterproof grade	IP65/IP67

东莞市高迪电子有限公司
 DONG GUAN GAO DI ELECTRONICS CO., LTD

TOLERANCE UNLESS OTHERWISE STATED:
 Up to 5 ±0.2
 Above 5 ~ 15 ±0.3
 Above 15 ~ 30 ±0.4
 Above 30 ~ 50 ±0.5
 Angle ±0.3°

3RD. ANGEL'S

UNITS MM

DRAWN BY:	DATE	MAT'L	TITLE	CONNECTOR
Jack Lu	12/13/19		MODLE	EDB4 - M 37 - PPL 14
CHECKED BY:	DATE	FINISH	DWG NO.	SIZE
Jacky Chen	12/13/19		PART NO.	A4
APPROVED BY:	DATE	SCALE	1 : 1	VER
Tony Kao	12/13/19	SHEET NO.	1 of 1	R1

ITEM NO.	DESCRIPTION	DRAWN	DATE